

M
MARK
SLÖJD
SWEDEN

AUTUMN

SCANDINAVIAN DESIGN FOR YOUR HOME & GARDEN

2018



A brilliant collaboration

TONY IRVING

MONIKA MULDER

The designer who can
master simplicity

Functionality

Lights with form and function

Heritage

Contemporary and classic style



FUNCTIONALITY



IN FASHION



TONY IRVING



HERITAGE



Let's decorate with light

Light and decoration go hand in hand.
One cannot really exist without the other,
because they are connected.

At Markslöjd we love all light, both
functional and decorative. We are very
proud to show you our new Autumn
collection for 2018.

Follow us on Facebook and Instagram.

[f](#) [Instagram](#) [P](#) @markslöjd

Get inspired with Markslöjd



Tony Irving
04 Hidden Gem

In Fashion

08 Bouquet

11 Meet the Designer, Monika Mulder

12 Kom

26 Porto

28 Cage

30 Coco & Bike

32 Simplistic Form

34 Wall lamps

36 Sky with Polar & Dots

38 Tribe

Functionality

14 Draw

17 Sling

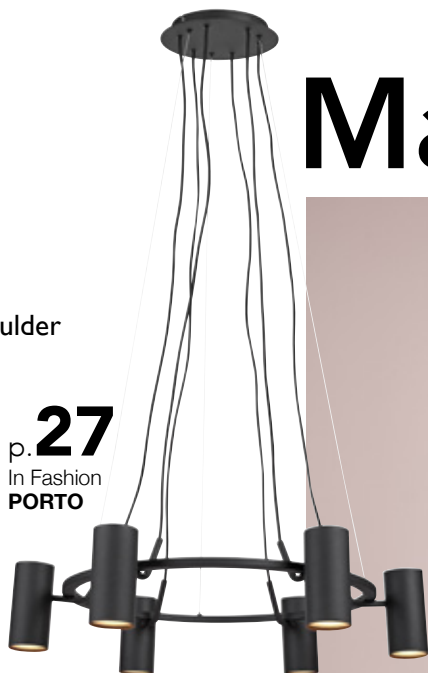
18 Frame

20 Pablo

22 Multi

Markslöjd

p. **27**
In Fashion
PORTO



p. **33**
In Fashion **ARROW**



p. **35**
In Fashion
MIDTOWN

Heritage

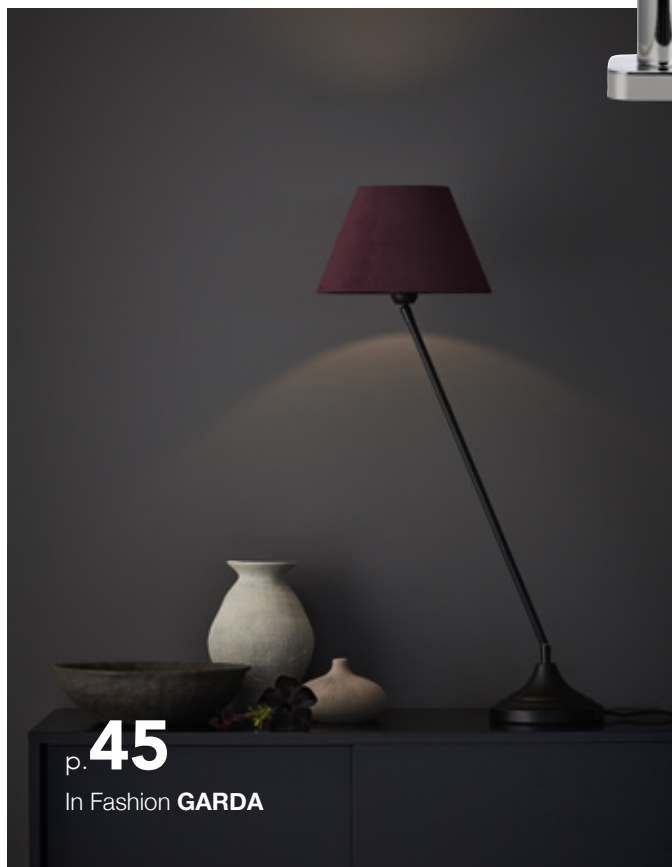
42 Connor

46 Bloomsbury

47 Bankers

50 **Garden24**

p. **45**
In Fashion **GARDA**







Brilliant, Tony Irving!

Markslojd is proud to present our new collaboration for Fall 2018. Tony Irving has created a modern and glamorous lamp where he has been inspired by his great passion dance as well as the concept of Yin & Yang.

The name of the lamp is Hidden Gem and comes in two sizes. Tony Irving is known as one of the judges in the Swedish version of Dancing with the Stars. He has designed the crystal lamp, Hidden Gem, and it shines and sparkles just as Tony does himself.



Deep Purple

For me the secret to the colour purple is its unique ability to bring calmness. Its exclusive tones create a sensation of power and control that wash over me leaving me with an understanding of my own value and self worth.

As a dancer Deep Purple symbolizes a connection with my spirit.



Teal

I chose Teal as I feel it represents the perfect balance, the combination of blue and green. The calmness of a clear blue sky mixed with the green of a summer meadow. For me Teal creates a feeling of success without a need to exhibit it.

As a dancer Teal symbolizes achievement.



Burgundy

The deep colour of Burgundy symbolizes the feeling of the Passion that comes from a loving relationship. Its red and brown hues represent blood and soil, and combined together it forms a colour that connects Heart and v.

As a dancer Burgundy symbolizes a connection with my family.



Amber


I chose the amber stone as it generates a honey coloured shine that for me represents the tranquility of the Autumn months. It reminds me of the warm glow of a fire and the peacefulness that comes with relaxing by the fireside.

As a dancer Amber symbolizes the connection with my soul.

"THE REFLECTION OF LIGHT IN THE CRYSTALS BRINGS A SENSE OF HARMONY. TO ENHANCE THE EXPERIENCE I HAVE CHOSEN FOUR CRYSTALS, EACH INSPIRING ITS OWN WAY.

THESE ARE MY HIDDEN GEMS."



A man with a beard and glasses, wearing a blue checkered shirt, sits on a light-colored sofa. He is holding a book and has a small dog lying next to him. The room features wallpaper with a pattern of flying birds and a large, ornate crystal chandelier. A coffee table in front of him holds a cup, books, and a vase of pink roses.

"MY CHANDELIER IS INSPIRED BY THE
BALANCE FOUND IN YIN AND YANG. IT IS
REPRESENTED THROUGH THE COMBINATION
OF SMOKE COLOURED AND CLEAR CRYSTALS."



BOUQUET 107327

In Fashion

Bouquet

Your flowers have never been more proud because Bouquet makes them shine. The combination between a LED base with a chrome finish and a glass vase that comes in two sizes, makes Bouquet a unique piece.



BOUQUET 107326



MEET THE DESIGNER

Monika Mulder

Monika Mulder works as a design consultant for Markslojd. This year we are launching Kom in 35 cm. She has created the popular series Larry and now Kom in a new set of colours.

Where do you draw your inspiration from in your design work?

I get inspired by materials, the production and the user. The task itself is the trigger. I love to dig into a project and make the best possible solution with the given ingredients. Often there is a list of demands. Nevertheless, a good concept must go on top of that and in so giving the end product some depth.

With the product Kom the concept was 'what kind of shape can I achieve with the production method' metal spinning.

In the sixties it was common with big metal pendant lamps, and I wanted to make my own version of it that would fit in with today's interiors. Something that has been tried and tested but still feels new.

What does your design process look like? Sketches, models and so on.

First I start to define the challenge and collect information. What is the brief? What products are already on the market? What are the production circumstances?

Then comes the questions of what I want to do and from which angle I will tackle the brief. When I have asked myself all these questions I start the process of generating ideas and developing solutions.

In the case of the Kom lamp I worked a lot with shapes. I start by sketching by hand. Then I make 3d models in the computer but I also test them 1:1 in card board. The best ideas undergo a couple of more rounds during the development process where I ask myself the same questions I had from the start one more time and in so improving the end product. Initially the shape for Kom was an entire shape in metal. The production method did not allow for the shoulder/neck shape which meant that we had to make a split line.



Then I chose to give the upper part another finish from the bottom part. That was a development that gained a lot concerning expression. And that is what I mean by getting inspired by the production process. I do not see problems as problems. Many times, these problems can be the beginning of something new which you can turn into an advantage.

How did you start your journey as a designer?

When I attended my education in Industrial Design in the Netherlands I did an internship at the design department at IKEA in Älmhult. That internship turned into a job and I moved to Sweden in 1998 and I worked for IKEA for a few years. I met a handsome Swede who made me want to stay in Sweden and then I founded my own design firm in Gothenburg. Today I work as a design consultant for different companies, for instance Markslojd and I must say that designing lighting is my favourite work.

Monika Mulder's lamp, Kom, will be launched in a new size and in the colours Petrol, Burgundy, Black and White for Fall 2018.

Kom³¹ cm

KOM 107379



KOM 107380



KOM 107381



KOM 107378



Monika Mulder's lamp, Kom, will be launched in a new size and in colours petrol, burgundy, black and white for Fall 2018.



Functionality

Draw

This shelf with a USB-function and a draw will be your new practical friend. The dimmer lets you set the mood of the room, just the way you want it. Twist it, turn it and let it shine where you need it. Say hello to our new multifunctional solution.



CUBE 107305



In Fashion

Cube

A modern and trendy table lamp that will give your room that added lift. It will be a contemporary addition to your sideboard and a focal point in your living room.

CUBE 107306





1.



2.

of course you can
adjust the lamp arm to
the left or right and the
lamp head up or down

Function comes first

A light fixture that really delivers is multifunctional.
Let there be light!



3.



simply
adjust
height
here

4.

1. **Antenna** black 107314 & white 107313 2. **Armour** black 107373 & white 107374
3. **Draw wall lamp** white 107376 4. **Sling table lamp** white 107303



Functionality

Sling

The Sling family has a new addition and this time it is a table lamp. Its trendy and modern design gives your room a boost.

SLING 107304



Functionality

Frame

A cool, innovative lamp that works as a decoration on the wall. Go totally artistic and frame your pictures like in a gallery. Take the spotlight and make it yours.







Functionality

Pablo

Creating art has never been easier. With Pablo you get both frame and light instantly. Be bold, be you.

Pablo comes in colours black and white.



Functionality

Multi

Is it a light or is it a shelf?

With USB and a dimmer, you have functionality at your fingertips.
Place it in the kitchen or by the bed.





LINEAR 107307

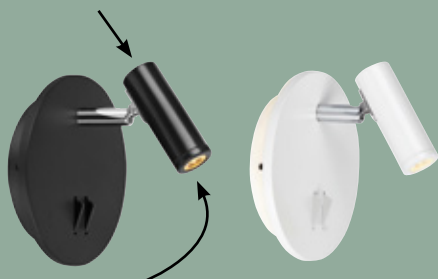
charge your phone with Linears USB port



1.



2.



the light points both up & down



3.



4.



5.

Functionality

1. **Multi** black 106482 & white 106969
 2. **Palma** black 107355 & white 107356 3. **Card** 107330
 4. **Linear** Floor lamp black 107307 & white 107308
 5. **Pablo** black 107177

Porto



Porto is a spectacular chandelier that commands the room. With modern lines, it is a presence that speaks for itself.

Porto is a chandelier with attitude. It is modern. It is a statement. And it knows it. Place it over a coffee table or a dining table. Give your room a bit of confidence. Give it Porto.







In Fashion

Cage

"Truth to be told, it is completely wrong to close a light in, but I could not resist to frame it with a grid."

Cage can be used as table lamp and wall lamp.

In Fashion

Coco & Bike

Design by Joakim Thedin

Coco

"When one is supposed to do lamp collection with the name Coco, one sooner or later must make a lamp that take centre stage. Therefore, I made the table lamp, Coco, perfect for every catwalk."

Bike

"The brief was to design a beautiful bed and wall lamp. I mixed one part classic shape, one part retro and a few splashes of cool. Voila, Bike."

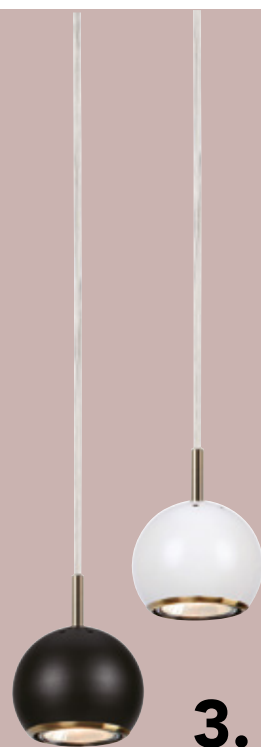




1.



2.



3.



4.



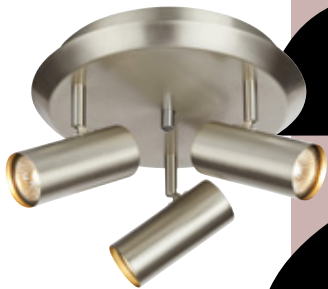
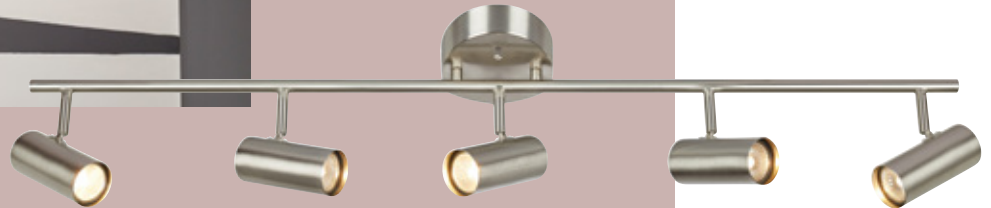
5.



- 1. **Bike 3 spot** white 107338 & black 107337
- 2. **Bike wall lamp** white 107335 & black 107334
- 3. **Coco pendant** white 107173 & black 107174
- 4. **Coco wall lamp** white 106872 & black 106873
- 5. **Coco table lamp** white 107341 & black 107340

Simplistic Form

Discover our simplistic and practical spotlights that is part of the collection In Fashion.



Stylish ceiling lamps

1. **Barcelona 5 spot** black 107351 white 107352 steel 107353
2. **Barcelona 3 spot** black 107348 white 107349 steel 107350
3. **Ciro 3 spot** black/steel 107411 white/steel 107412

Design by Joakim Thedin



In Fashion
ARROW 107368

Wall lamps

Check out our new wall lamps. They fit in every home.

1.

2.

3.

4.

- 1. **Barcelona wall spot** black 107345 white 107346 steel 107347
- 2. **Ciro flex wall spot** black/steel 107409 white/steel 107410
- 3. **Ciro wall spot** black/steel 107408 white/steel 107407
- 4. **Karli wall lamp** black 107323 white 107324 steel 107325

MIDTOWN 107406

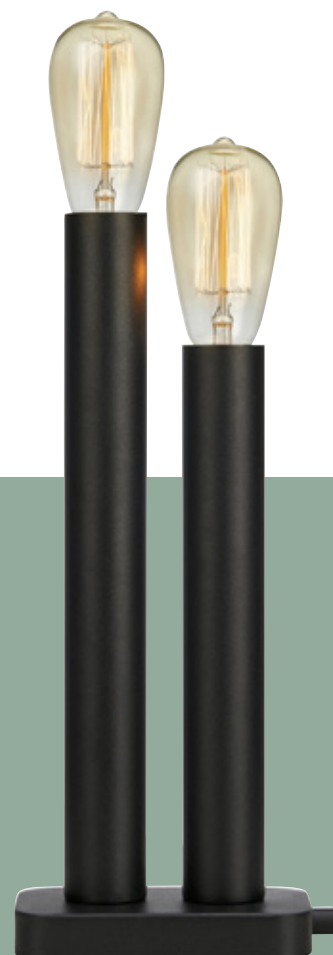


In Fashion

Midtown

**We asked Håkan Svennesson tell us
about his design.**

"Symbolically Midtown can be interpreted as two people who together create a unit. Midtown shape and colour give it a contemporary feel. The lamp is timeless and simplistic with a few well-balanced parts. I find it very important to work with proportions as well as with material and function. Midtown will add a decorative touch to your home."



MIDTOWN
107405



SKY 106169

SKY 106170

In Fashion

Sky

The pendant Sky is available in brass and chrome. Now we introduce a new model, completely in black. Sky can be used in the window, as a lamp above a bench or a dining table, or why not by the bed.

In Fashion

Polar & Dots

Discreet with a beautiful design. Polar & Dots can be used everywhere in your home, in the living room, bedroom or kitchen.



POLAR 107360



DOTS 107359

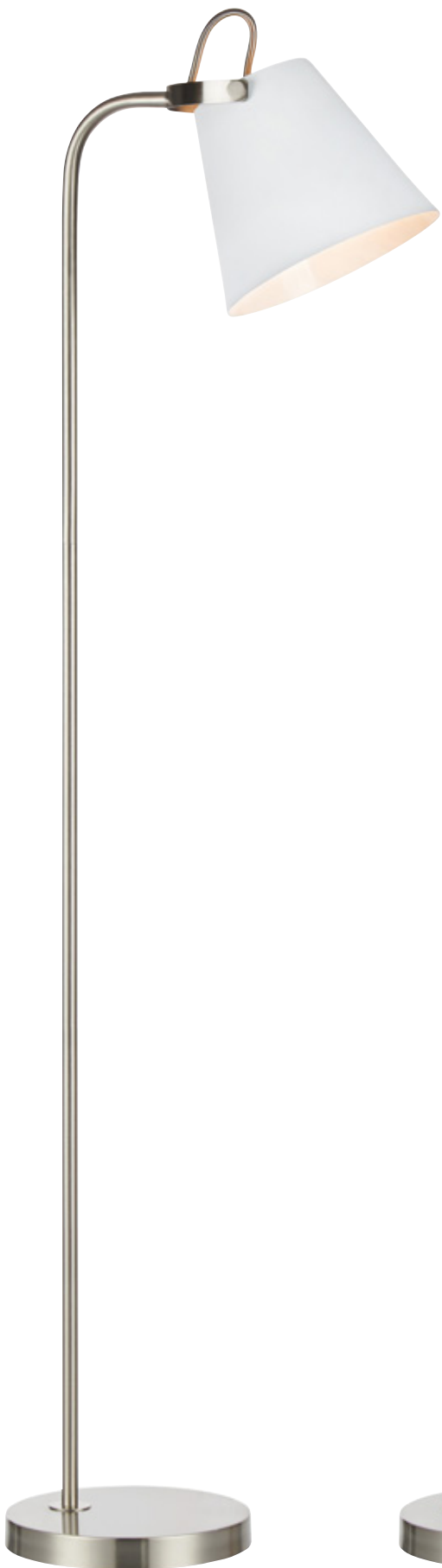


POLAR 107361



DOTS 107358





In Fashion

Tribe

A design series in three colours; white, grey and burgundy. Consists of a floor lamp, wall lamp and pendant. Perfect for living room, kitchen and bedroom. Stylish, simple and a obvious choice for any contemporary Scandinavian home.

Floor lamp White 107398 Burgundy 107400
Wall lamp White 107395 Burgundy 107397



Tribe Wall lamp Grey 107396 Pendant Grey 107390 Floor lamp Grey 107399



In Fashion

Tribe Pendant

With its simplistic style, Tribe Pendant is a stylish addition to your kitchen or living room. It embodies modern Scandinavian style.

Tribe Pendant White 107389 Burgundy 107391



Tribe Pendant Grey 107390





Heritage

Connor

Classic with an eclectic touch, it makes a unique statement as a bedroom lamp or on top of a sideboard.



1.



2.



Heritage

Garda

Simplistic design but with some punch. These lamps does not mind being bent out of shape. The lamp shade is in a lovely velvet.



3.



4.

1. **Coast wall lamp** black 107312 white 107311 2. **Garda wall lamp** black 107387 white 107388
3. **Coast table lamp** black 107310 white 107309 4. **Garda table lamp** 107385





Heritage

BLOOMSBURY 107328

Bloomsbury

Little Bloomsbury is inspired by an English pub lamp. It takes its confident place by the bed or behind the sofa. The lamp's strong design makes its presence suitable for hallways and corridors as well.

Heritage

Bankers

A library lamp in quintessential British style with a contemporary colour scheme in black and white.



BANKERS 107354



CLASSY 107302

Heritage



Our Heritage lamps have a British style that lends itself well to the Scandinavian, modern home. True creativity is born out of contrasts.

- 1. Bloomsbury antique/white 107329**
- 2. Classy clear/brass 107002**
- 3. Bankers oxide/green 105930 & 105931**
- 4. Connor black/white 107371**





STONE SPOT 107286



DECKLIGHT 107285/107284



DECKLIGHT 107289



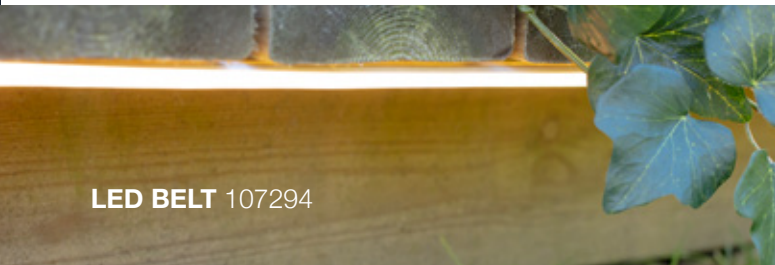
SPOT 106929



POLE SPHERE 107283



LIGHT CHAIN 107293



LED BELT 107294

GARDEN24

We have made it simple to light your outdoor space, garden or outdoor walls. Our practical and wide range of products lets you brighten up your garden.

Don't forget that Garden 24 can be installed without help from an electrician.



Thank You

Lagerhaus
www.lagerhaus.se

Hans K
www.hansk.se

Ellos
www.ellos.se

Photographer

Clive Tompsett
www.clivetompsett.com

SVE | Vi förbehåller oss rätten för eventuella ändringar i sortiment, konstruktion och utförande. Av trycktekniska skäl kan färgavvikelser förekomma.

ENG | We reserve the right to make changes in the product range, design and model. Please note that, as a result of printing processes, actual colours may vary from those reproduced here.

GER | Das Recht auf Änderungen in Sortiment, Konstruktion und Ausführung behalten wir uns vor. Aus drucktechnischen Gründen sind farbliche Abweichungen möglich.

FRA | Tous droits à modifications de l'assortiment, de la conception et de la réalisation réservés.

FIN | Pidätämme oikeuden valikoima-, rakenne- ja mallimuutoksiin. Painoteknisistä syistä ovat värimuutokset mahdollisia.

POL | Zastrzegamy sobie prawo do dokonania zmian ofertowych i konstrukcyjnych. Z uwagi na proces druku przedstawione kolory mogą różnić się od rzeczywistych.

CZECH | Právo na konstrukční a nabídkové změny vyhrazeno. S ohledem na možnosti tisku se uvedené barvy mohou lišit od skutečných.

Copyright © 2018 Markslöjd Lighting Group AB. All rights reserved.

Markslöjd and other product marks are trademarks of Markslöjd Lighting Group AB.

The designs are protected through registration in several countries or automatically through unregistered design right within the EU.

**Sweden**

Markslöjd AB
Box 253, S-511 23 Kinna
Grånevägen 5 S-511 62 Skene
Ph +46 (0)320 305 00
Fax +46 (0)320 305 28
info@markslويد.com

Norway

Markslöjd AS
Box 253, S-511 23 Kinna
Grånevägen 5 S-511 62 Skene
Sweden
Ph +47 33 45 29 20
Fax +47 33 45 29 21
info.norway@markslويد.com

Finland

Markslöjd Oy
Kappelitie 6
FIN-02200 Espoo
Ph +358 (0)9723 16660
Fax +358 (0)9723 16661
info.finland@markslويد.com

Denmark

Markslöjd ApS
Dagmar Petersens Gade 68, 4.th.
8000 Aarhus C
Ph +45 70 20 20 17
Fax +45 70 22 30 20
info.denmark@markslويد.com

Germany

Markslöjd GmbH
Wiesenstrasse 91
D - 53639 Königswinter
Ph +49 (0)2244 90 23 89
Fax +49 (0)2244 91 29 25
info.deutschland@markslويد.com

Central and Eastern Europe

Markslöjd Sp.z.o.o.
ul. Batorowska 24
62-070 Dabrowa k. Poznania
Ph +48 (0)61-8499-014
Fax +48 (0) 61-8943-500
biuro@markslويد.pl
www.markslويد.pl

Far East, Middle East, Oceania

Markslöjd Lighting Group (FEI) Ltd
Room 1802, 18/F, Jian Sheng
Building, Ti Yu Road No.5,
Nancheng District, Dongguan,
Guangdong, China
Ph +86 769 2288 0829/0839
Fax +86 769 22603620
mlg.hk@markslويد.com



Markslöjd



@markslويد
#markslويد



Markslöjd
#markslويد



www.markslويد.com

Lights of Scandinavia